



WHAT'S NEW

PINK POWER:  
OUR TRIBUTE TO HONEYSUCKLE,  
PANTONE'S 2011 COLOR OF THE YEAR!

# Out of the Box *produced by Ann Kaiser*

ACCESSORIES ■ SHOPS ■ JEWELRY ■ BOOKS ■ PEOPLE ■ GIFTS



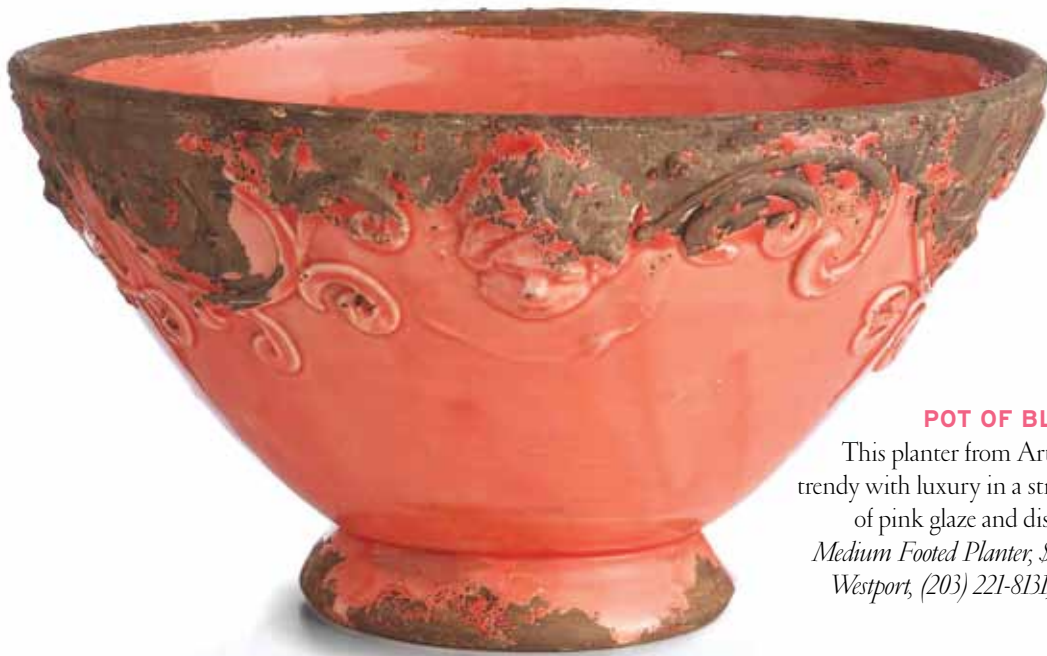
## PINK LADY

The Mirabella lamp from Wildwood Lamps & Accents is a little bit country, a little bit rock-and-roll. \$375, *CT Home Interiors, West Hartford, (860) 236-5856, ctbomeinteriors.com.*



## POT OF BLUSH

This planter from Arte Italica mixes trendy with luxury in a striking combination of pink glaze and distressed edges. *Medium Footed Planter, \$119, LCRwestport, Westport, (203) 221-8131, lcrwestport.com.*



## EASY DOES IT

Not ready to commit to honeysuckle completely? Ease into it with this floral pillow from KL Designs. *\$175, New Canaan, (203) 966-7095.*



## COVER UP

All of the coverlets in Amy Butler's bedding collection are made from 100 percent organic cotton and come in lots of upbeat patterns and shades. *\$99.99-\$179.99, Bed Bath & Beyond, Norwalk, (203) 849-9285, and Milford, (203) 783-1477, bedbatbandbeyond.com.*







WHAT'S NEW



**TWO-SIDED TREASURES**

These colorful coats are made of Indian dowry quilts, and they're reversible, so you can always suit your mood. \$430—\$600, *The Joanna Jobn Collection*, Woodbury, (203) 266-4800, [thejoannajobncollection.com](http://thejoannajobncollection.com).



**WALL ART**

Ready to take pink to the max? Cover your walls with one of these fun papers. *Left to right: Nekkar*, from *Trove*, around \$10/sq. ft., [troveline.com](http://troveline.com) and *Drag DR 1289*, from *Farrow & Ball*, \$175/double roll, [farrow-ball.com](http://farrow-ball.com).

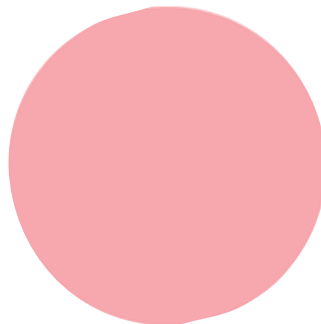
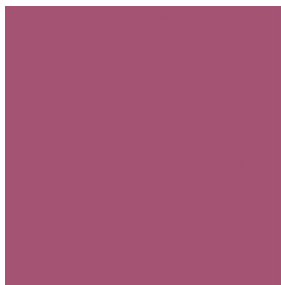


**OTTOMAN EMPIRE**

Add some serious punch to your living room with this ottoman from HB Home. \$1,200, *Greenwich*, (203) 629-4999 and *Westport*, (203) 226-8777, [bbbomedesign.com](http://bbbomedesign.com).

**PAINT PICK-ME-UP**

Don't be afraid to embrace the trend—these colors will look fresh and pretty for years to come. *Top right: Racer Pink* from *Ralph Lauren*, \$28—\$33/gallon, available at *True Value Home Center*, *Bethel*, (860) 536-9601, [ralphlaurenhome.com](http://ralphlaurenhome.com); *bottom right: Bubble Bath* from *Benjamin Moore*, \$34—\$62/gallon, available at *Ring's End*, *Norwalk*, (203) 840-7388, [ringsend.com](http://ringsend.com); and *left: Devine Flamingo* from *Devine Color*, around \$58/gallon, [devinecolor.com](http://devinecolor.com).







**WINGED BEAUTY**

The Wing Chair, designed by Hans Wegner, is a modern classic that looks equally cool at the office or at home. \$7,699, *blm Total Office, Stamford, (203) 324-3138 and coalesce.com.*



**A HINT OF PINK**

A stripe of honeysuckle is used as an accent in these vintage French tea towels. Along with these mid-century German pitchers, they are part of the collection at interior designer Pamela Peterson's booth at the Connecticut Antiques Center. *Tea towels, \$20 each, Stamford, (203) 355-9335, objectsblog.com.*



**SHOWER POWER**

The graphic DKNY Graffiti Floral Bath Collection brings energy and freshness to a bathroom. \$7.99–\$49.99, *dknyhome.com.*



**GOOD GRAFFITI**

These graffiti-inspired, Elle Sakellis-designed scarves pay homage to the beauty and grit of New York City, in 100 percent silk chiffon. \$158, *otrera.com.*



**RETAIL THERAPY**

BY ANN KAISER

**CHARMING CHOCOLATES**

If you love **Belgique's** brioche, get them while they last! With the opening of his second store, located in New Canaan, Chef Pierre Gilissen marks his return to a primary focus on handmade Belgian chocolates, phasing out pastries and desserts. 88 Elm Street, New Canaan, (203) 801-0538.

**WATER WORKS**

**The Life Aquatic** is a labor of love for owner and hobbyist Randy Jahier. In addition to a huge selection of his favorite fish, the store has touch screens throughout where visitors can learn about the fish in the tanks. Comfy leather couches provide a place to browse numerous underwater-themed books. 9 South Avenue, New Canaan, (203) 972-1200.

**SPRUCE UP**

Check out **Spruce Home & Garden** for high-end garden products, sculptures, and smaller gift items for \$20 or less. 20 Bank Street, New Milford, (860) 355-4383, *sprucehomeandgarden.com.*

**CELEBRATE IN STYLE**

**Party Party** in Fairfield center has everything you need to host a terrific soiree. Owner and party planner Mary Thornton offers all the ingredients for party perfection, from invitations to full event-planning services. 14 Sanford Street, Fairfield, (203) 292-9277, *partypartyfairfield.com.*

LEFT PAGE: JOANNA JOHN JACKETS PHOTO BY JULIE CURTIS